

TECHNICAL SPECIFICATION

ROTARY AC TRIAC RF DIMMER

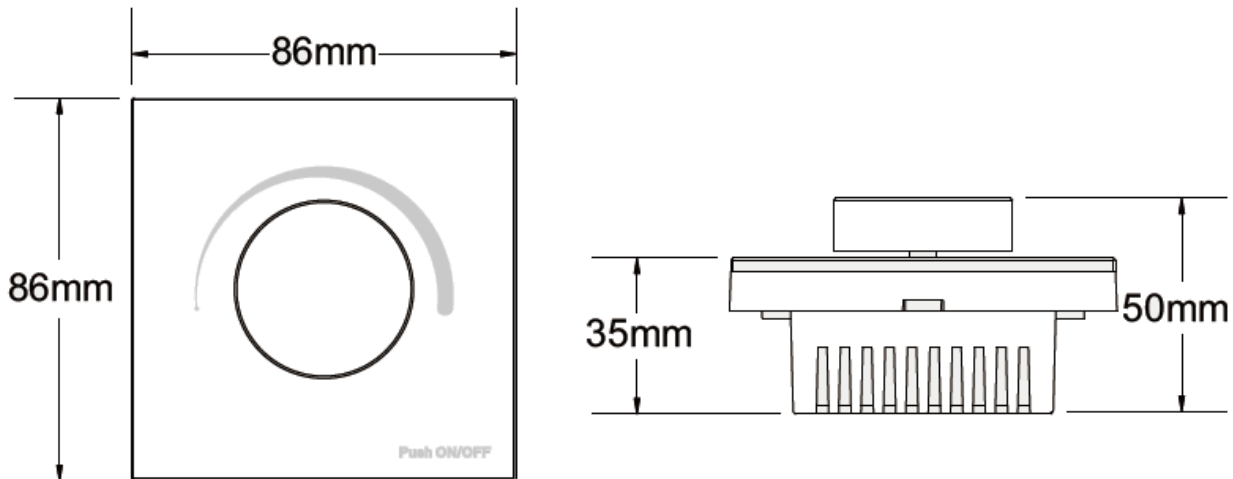


- Triac dimmable and Mosfet dimmable.
- Built in 2.4GHz module, can be used as RF dimming remoter, remote control more dimming receivers.
- When direct connect dimmable light, great compatibility with a variety of dimming remoter.
- Leading edge dimming or trailing edge dimming set by dip switch.
- Minimum brightness set by dip switch.
- Rotate knob to change brightness, support push, long push operation.
- To dim and switch single color dimmable LED lamps, traditional incandescent and halogen lights.
- Can work with Wi-Fi-relay controller after install APP on IOS and Android system.

Technical data:

Input voltage:	100-240VAC
Output voltage:	100-240VAC
Output current:	1.2A
Output power:	100-288W
Remote distance:	30m
Working temperature:	-30°C~55°C
Product size:	L86×W86×H36.5mm
Net weight:	152g
Catalogue number:	99DIMMERR

Dimensions:



Panel controller match remoter method:

Match: Turn on light, turn off, immediately push for 5s, within 5s press any key of the remoter.

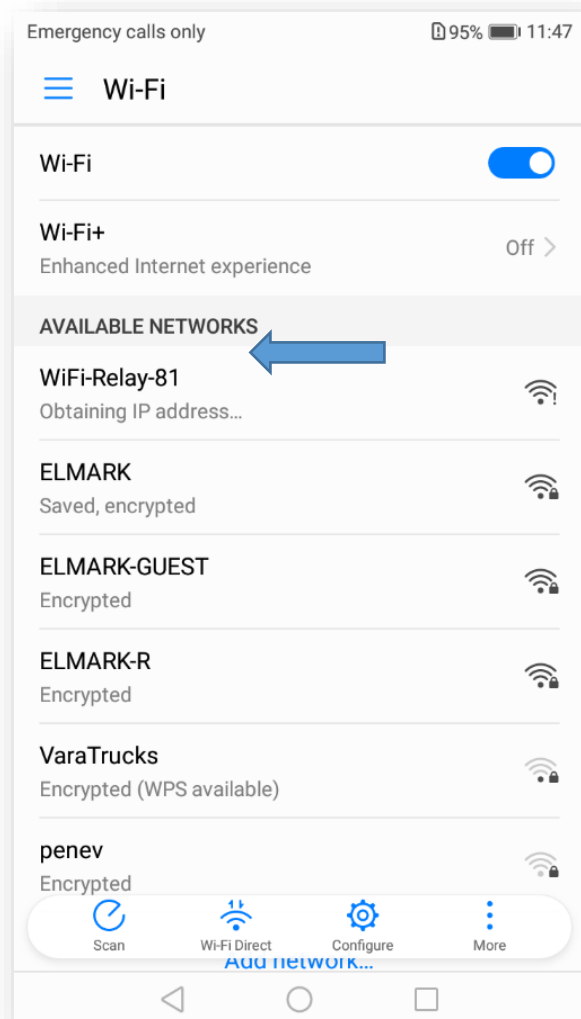
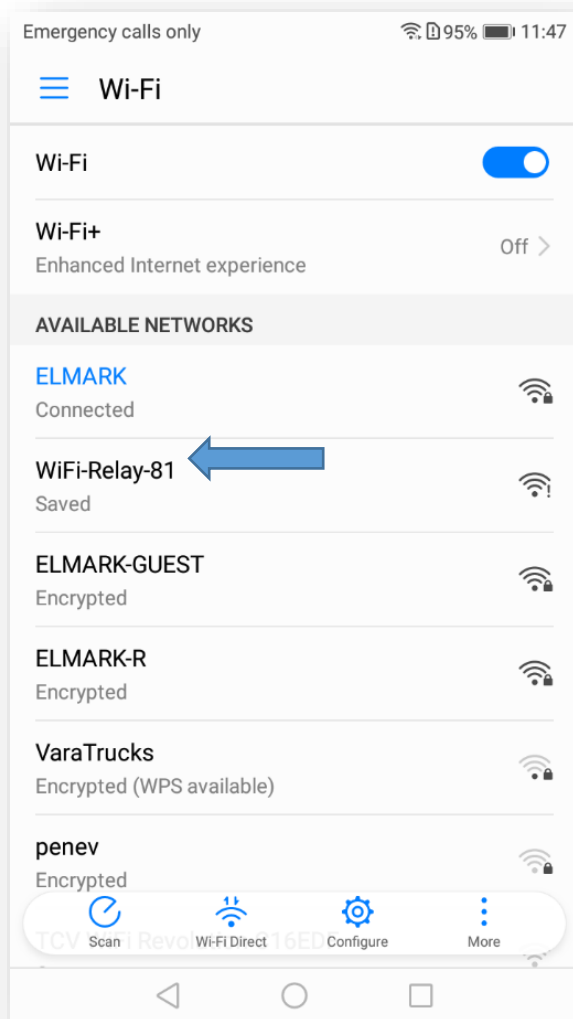
Delete: Turn on light, turn off, immediately push for 10s delete all matched remoters.

➤ How to connect AC TRIAC RF DIMMER with Wi-Fi devices

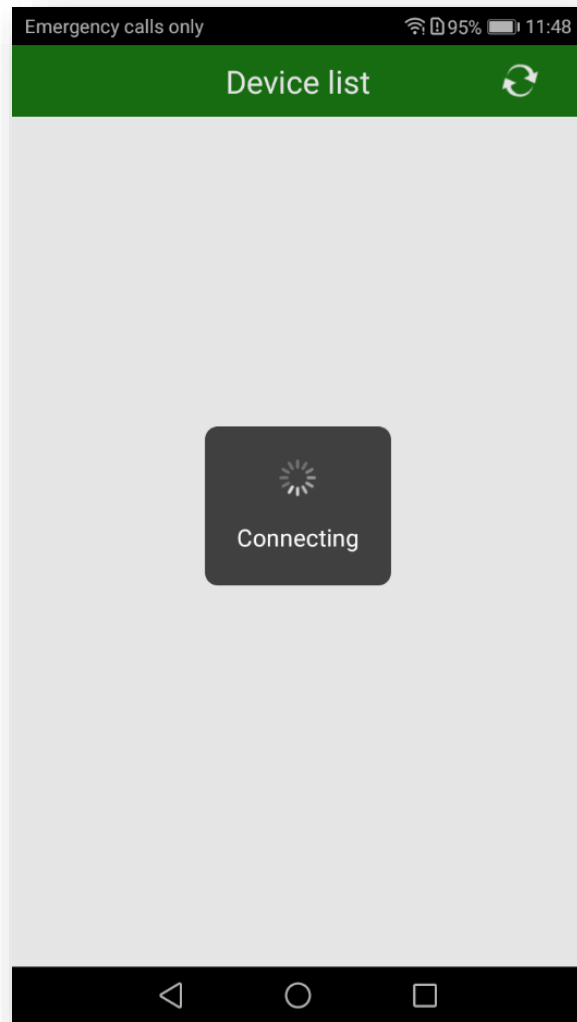
The **ROTARY AC TRIAC RF DIMMER** can work by installed iOS or Android application, via a Wi-Fi relay controller.

How to:

1. Turn on Wi-Fi relay controller.
2. Connecting the Wi-Fi controller to **your** network.

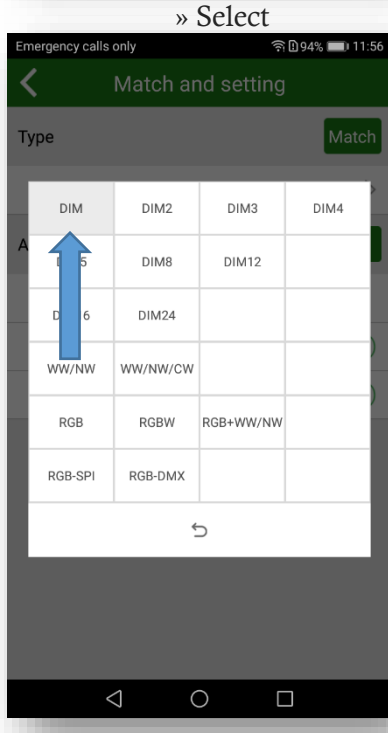
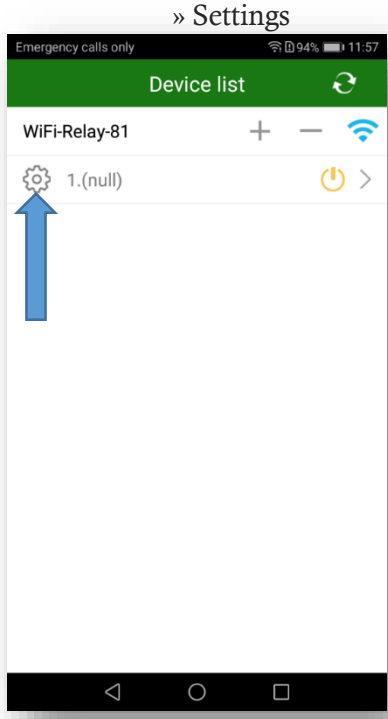
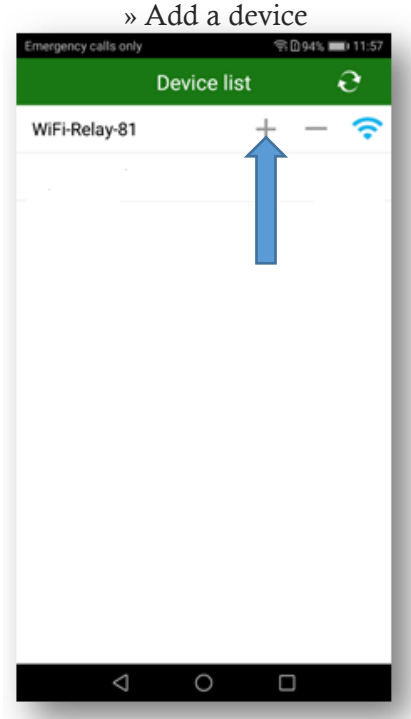


3. Start the “Skydance” app (should be already installed).

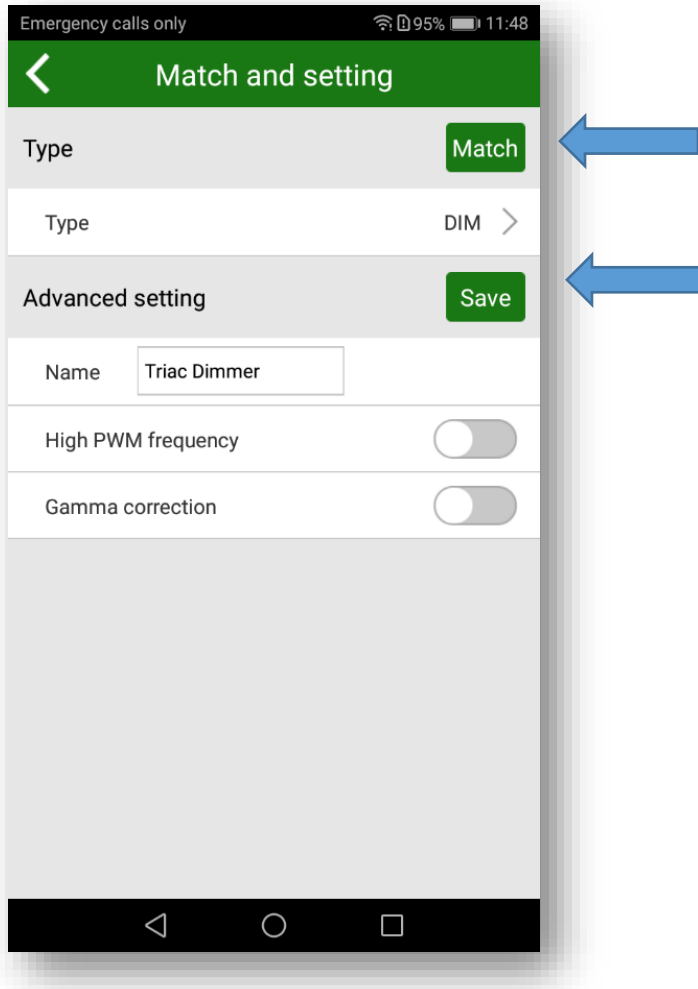


4. Connecting the Wi-Fi relay controller with the **ROTARY AC TRIAC RF DIMMER.**

4.1. Select the type of device we will command



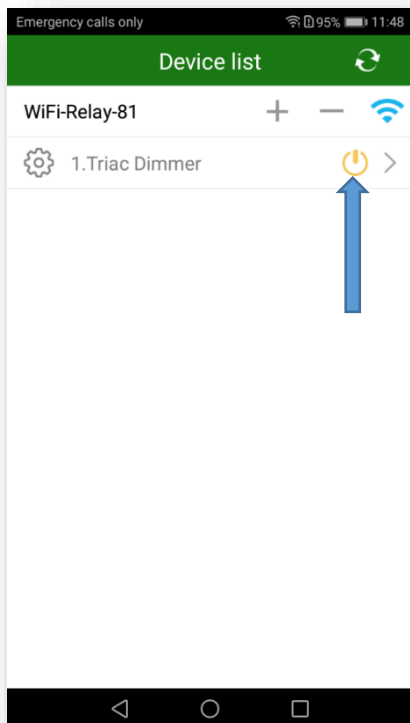
5. Long press the rotary button for 5s, within 5s press "Match" on your phone.
Press „Save” for finalizing the settings.



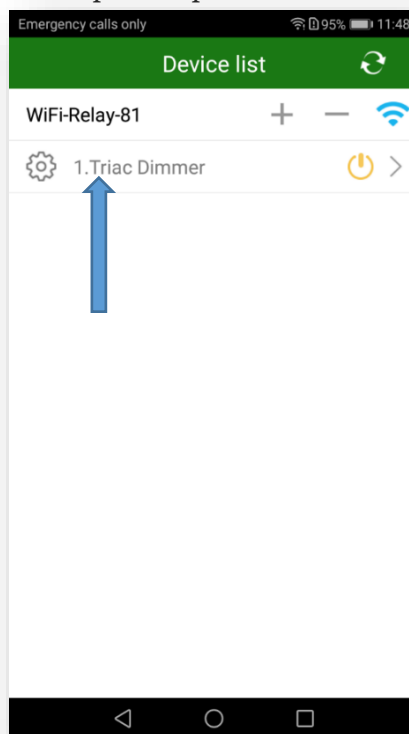
6. Your device is now connected.

FUNCTIONS:

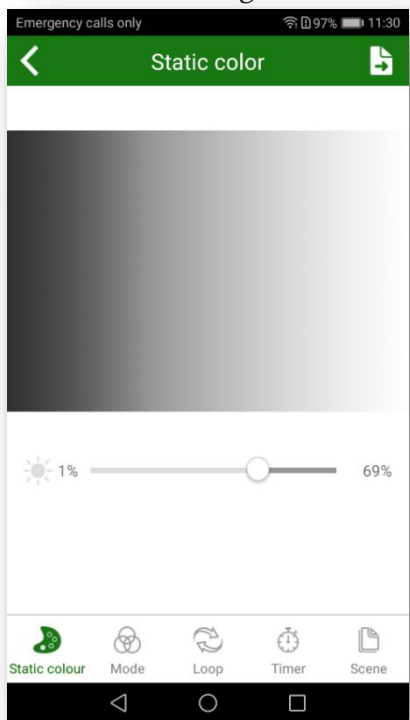
» ON/OFF



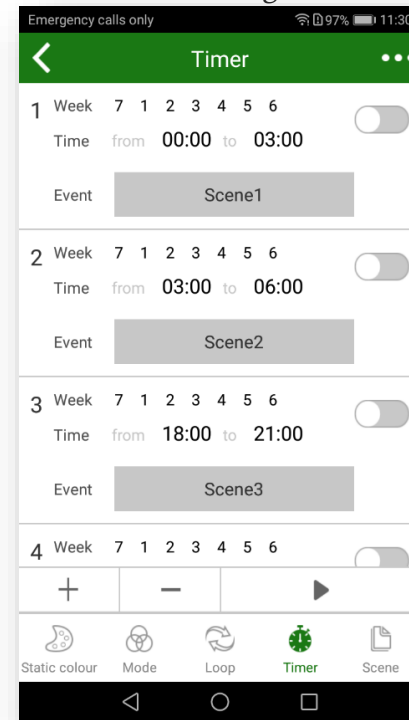
» Open the product menu



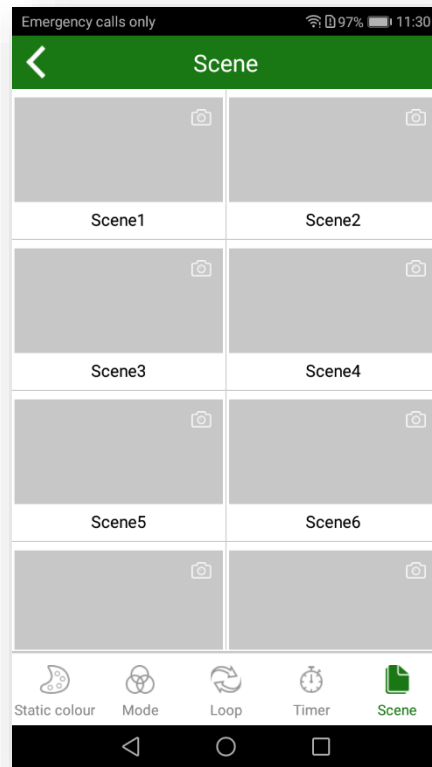
» Dimming from 0-100%



» Timer's settings



» Select predefined scene



Key function:

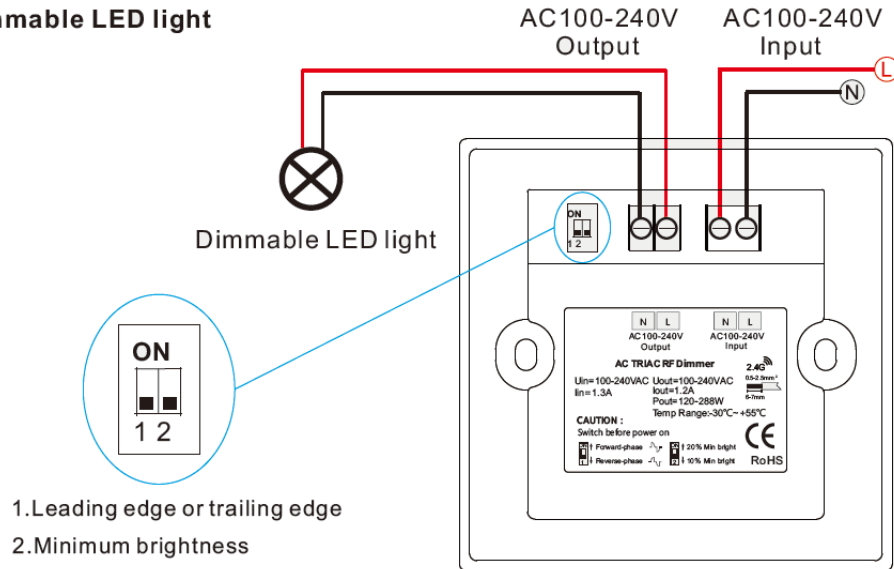
Push: Turn on or off light.

After turn on light, rotate knob to change brightness, 2.5 turns, 50 levels.

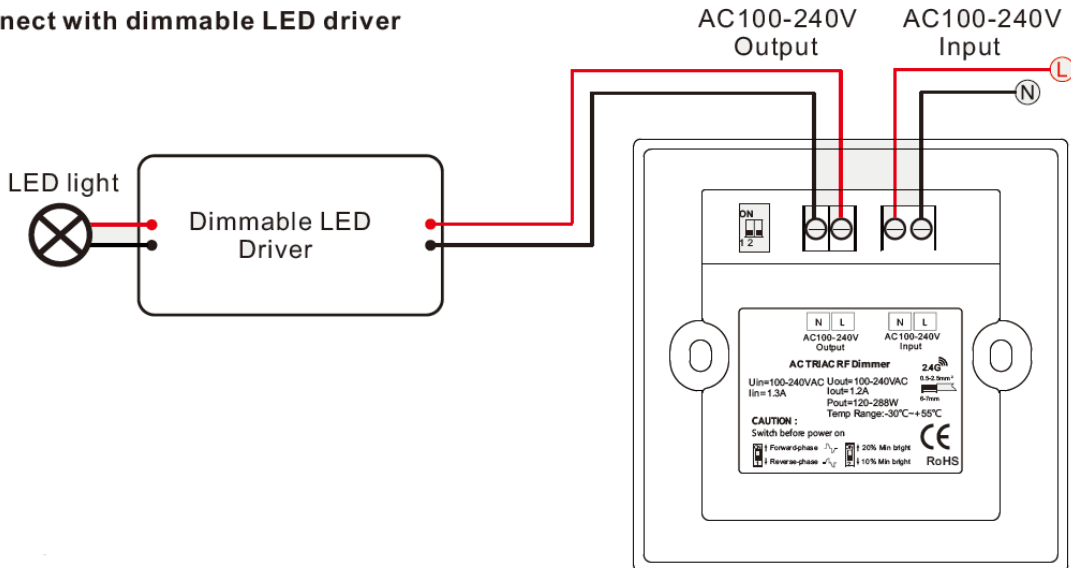
Long push (1-5s): Fine adjust brightness.

Wiring diagram:

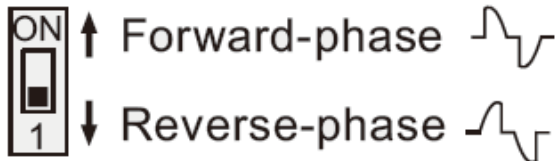
Connect with dimmable LED light



Connect with dimmable LED driver



Dip switch setting



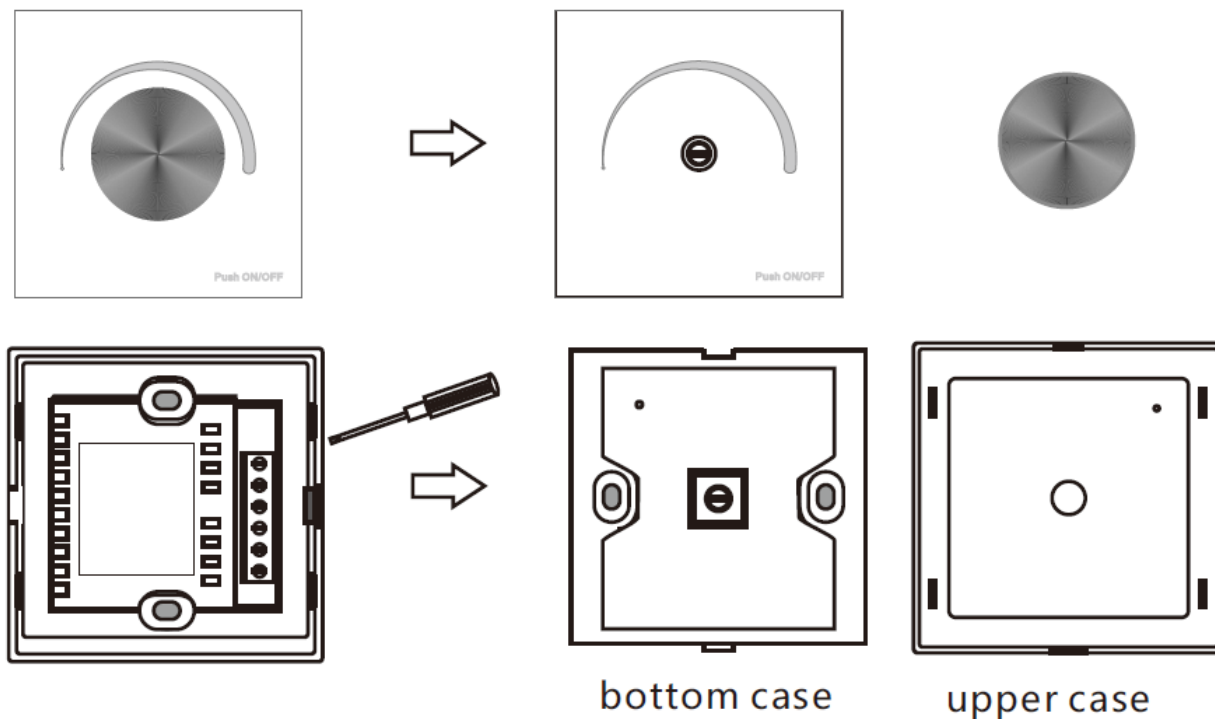
- Select leading edge dimmer or trailing edge dimmer according to your dimmable LED light.

Forward-phase control dimmer(TRIAC)

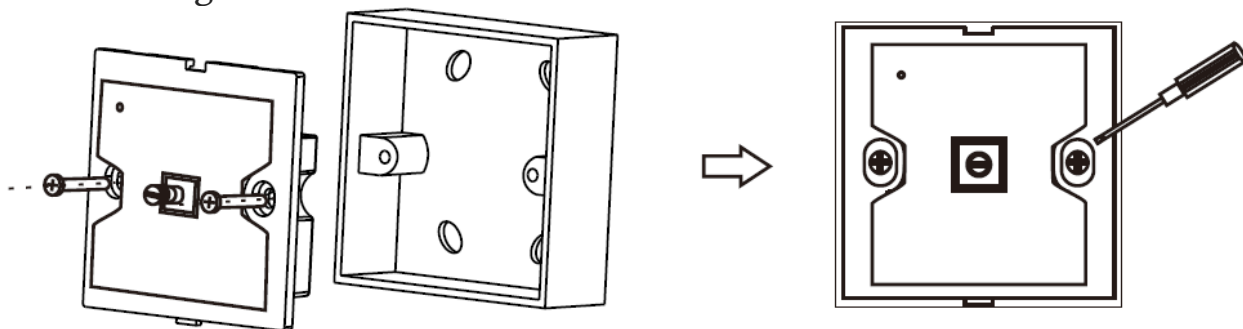
Reverse-phase control dimmer

Installation diagram:

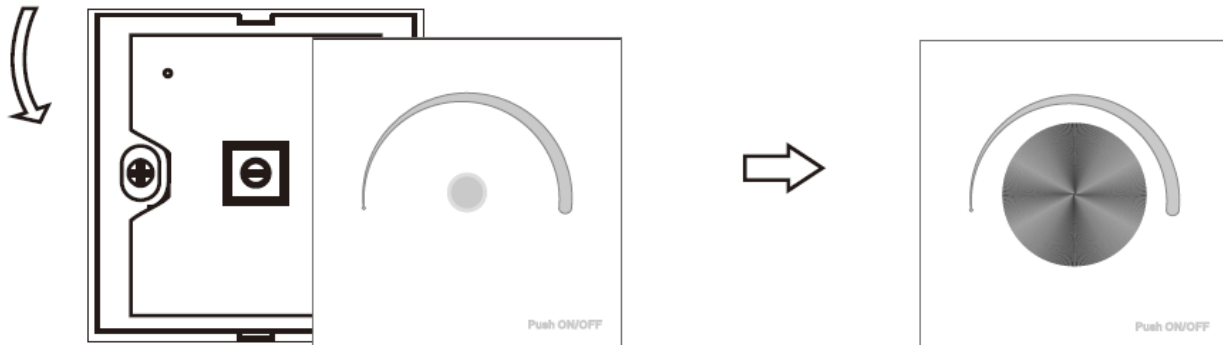
- Remove the knob, then flip panel, inserted into the card edge aperture with a small screwdriver, gently pry and open the panel.



- After connect wires, put bottom case into 86 bottom box, put in the screw and tighten.



- From top to bottom, moderately cover upper case, then mount knob, complete installation.



NOTES:

- In order to ensure safety, turn off the power first before wiring, ensure correct wiring to avoid short circuit.
- In the process of installation, don't push the knob hardly, so as not to loose knob spindle and scratch panel.